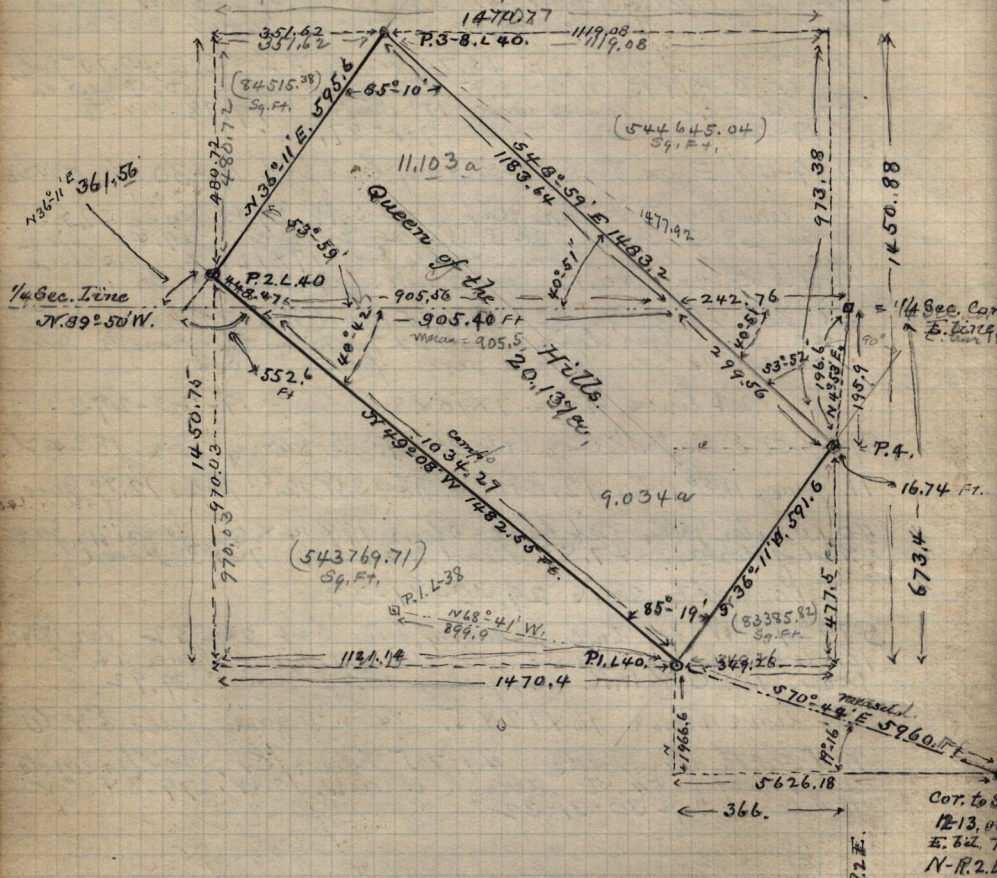


JAN. 26th 1895.

Corrections in areas and Section connections, "Queen of the Hills" lode, Lot 40, Paradise Mining Dist.

Total + area = 2 133 488.64 Sq. Ft., not deducting the 4 triangles of 4 triangles 1256315.95 Sq. Ft.
 Remaining area = 877 172.69 Sq. Ft. = 20.137 acres = Queen of Hills



The length of the S. line of Sec. 12 = 5260.2 Ft. according to the official Records of the Surveyor.

the mean course of N 89° 50' W.

From P. 1 Lot 40, P. 1. Lot 38, bears N 68° 41' W 899.9 Ft. dist. act. ^{measured}
 Area of Queen of the Hills = 20.137 acres.

M. Line Sec. 12-T. 8. N. R. 2 E.

Cor. to S.
 12-13, 04
 E. 82.7
 N-R. 2 E